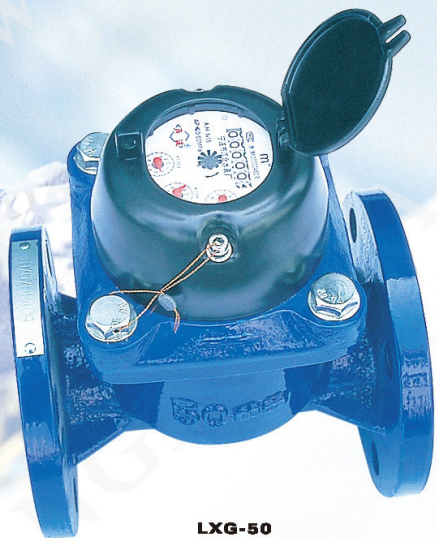


LXG-50~300
LXGR-50~300
HORIZONTAL IRRIGATION WATER METER
水平旋翼式水表(污水表)



LXG-50

【用途】

本系列水表用于记录大流量管道的用水量，适用于单向水流的自来水、井水、河水、灌溉，亦可用于污水计量，不宜测量具有腐蚀性的液体

【Application】

It is designed to measure the total volume of unidirectional water passing through large pipeline, such as tap water, well water, river water as well as sewage, except corrosive water.

【特点】

- 指示机构采用磁传结构，具备防磁干扰功能
- 可拆卸结构，便于维修及保养
- 流通能力大，压力损失小，抗水冲击和抗污染能力强
- 读数清晰直观，使用寿命长
- 流量性能全面优于GB/T778-2007标准和ISO4064标准
- 可配备发讯远传计数器，有三种脉冲讯号输出，适用于干簧管，发光二极管，金属感应器

【Features】

- Magnetically driven, antimagnetic.
- Removable structure, easy maintenance.
- High flow capacity, small pressure loss, water impact resistance and anti-pollution.
- Clear reading, long service time.
- Superior performance to GB/T 778-2007 and ISO 4064
- Availability to be equipped with remote reading registers, three types of pulse signal, suitable to be used with reed switch, light emitting diode and metal sensor.

最小读数=Minimum Reading.
最大读数=Maximum Reading.

流量技术参数 Flow Technical Data

| 公称口径 Meter size Dia DN (mm) | Q ₃ /Q ₁ | Q ₂ /Q ₁ | 流量(Flow rate) | | | | 读数(Reading) | |
|---|--------------------------------|--------------------------------|---|--|---|--|--------------------------------------|--------------------------------------|
| | | | 过载流量 Q ₄ Overload Flow rate | 常用流量 Q ₃ Nominal Flow rate | 分界流量 Q ₂ Transitional Flow rate | 最小流量 Q ₁ Minimum Flow rate | 最小读数 Minimum register capacity | 最大读数 Maximum register capacity |
| mm | | | m ³ /h | | | | m ³ | |
| 50 | 20 | 4 | 31.25 | 25 | 5.0 | 1.25 | 0.0002 | 999999 |
| 65 | 20 | 4 | 50 | 40 | 8.0 | 2.0 | 0.002 | 999999 |
| 80 | 20 | 4 | 78.75 | 63 | 12.6 | 3.15 | 0.005 | 999999 |
| 100 | 20 | 4 | 125 | 100 | 20 | 5.0 | 0.005 | 999999 |
| 125 | 20 | 4 | 200 | 160 | 32 | 8.0 | 0.005 | 999999 |
| 150 | 20 | 4 | 312.5 | 250 | 50 | 12.5 | 0.005 | 999999 |
| 200 | 20 | 4 | 500 | 400 | 80 | 20 | 0.005 | 999999 |
| 250 | 20 | 4 | 787 | 635 | 127 | 31.5 | 0.05 | 9999999 |
| 300 | 20 | 4 | 1250 | 1000 | 200 | 50 | 0.05 | 9999999 |

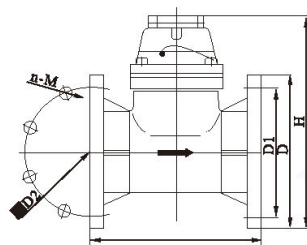
外形尺寸及重量 Dimensions and Weight

| 规格 Specification | L | D | D1 | H | 法兰螺栓 Flange bolt | 重量 Weight |
|---------------------|-----|-------|-------|-----|---------------------|--------------|
| | mm | | | | dxn | Kg |
| 50 | 200 | φ 165 | φ 125 | 253 | M16x4 | 15 |
| 65 | 200 | φ 185 | φ 145 | 268 | M16x4 | 15 |
| 80 | 225 | φ 200 | φ 160 | 284 | M16x8 | 17.5 |
| 100 | 250 | φ 220 | φ 180 | 295 | M16x8 | 20 |
| 125 | 250 | φ 250 | φ 210 | 310 | M16x8 | 22 |
| 150 | 300 | φ 285 | φ 240 | 339 | M20x8 | 33 |
| 200 | 350 | φ 340 | φ 295 | 382 | M20x8 | 45 |
| 250 | 400 | φ 395 | φ 350 | 433 | M20x12 | 94 |
| 300 | 450 | φ 445 | φ 400 | 483 | M20x12 | 114 |

最大允许误差 Maximum Permissible Error

- a) 低区 (Q₁ ≤ Q < Q₂) 最大允许误差为 ±5%
b) 高区 (Q₂ ≤ Q ≤ Q₄) 最大允许误差为 ±2% (热水表 ±3%)

Accuracy between Q₁ and Q₂ ±5%
Accuracy between Q₂ and Q₄ ±2% (±3% for hot water)



主要参数

温度等级：冷 ≤ T50 / 热 T90
压力等级：MAP 10
压力损失等级：ΔP63
上游流场敏感度等级：U10
下游流场敏感度等级：U5

WORKING CONDITION

Working temperature for cold water meter: +0.1 °C ~ +50 °C
Working temperature for hot water meter: +0.1 °C ~ +90 °C
Head loss: ΔP63
Working pressure ≤ 1.0 Mpa